

Using ICT to with Special Needs KS1: A Visit to the Farm

Learning Outcome s:

- pupils will learn to co-operate, take turns
- - pupils will develop hand and eye co-ordination and fine motor skills
- pupils will be able to give and obtain information.
- Pupils will develop an awareness of the size of various animals.
- Pupils will use words, phrases and pictures to communicate
- They will use their own sequences of pictures, words and phrases to communicate their ideas.
- Pupils will know that pictures, text and sound can be stored electronically.

Activity:

Introduction: On a school visit to a farm, the teacher (and pupils!) will take photographs of the class playing with and touching the animals. On return to school these will be loaded into the computer and talking and listening will take place around the computer or using the data projector.

Main Session: With the teacher and using CD ROM Reader Rabbit's Playtime, SEN children will visit the farm animals on the computer. They will listen to the sounds of the animals. As a group the children will make up a story of their visit to the farm and this will be typed up by the teacher using a word processor such as Talking Write Away or Symbols 2000.

The most able children in the class will be using the printed digital photographs to write their own story of their visit. This may be done in handwriting or on computer.

The main group of pupils will be using the printed digital photographs to make a collage of the visit. They might make labels to match the photos.

Plenary:

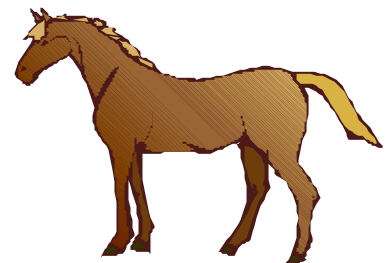
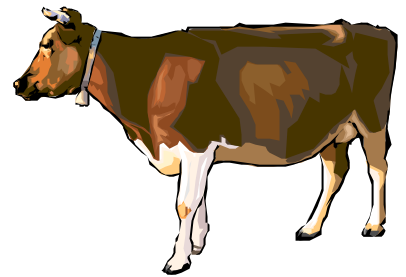
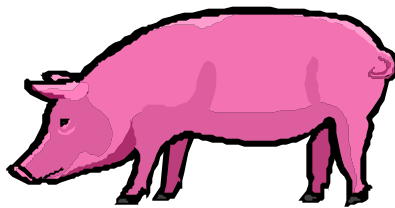
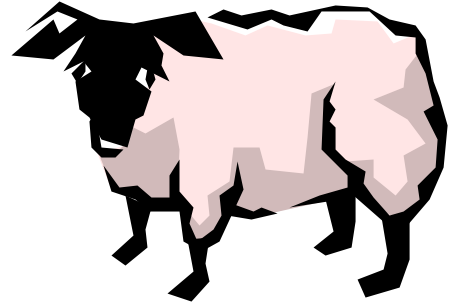
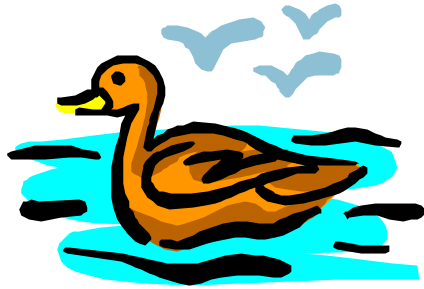
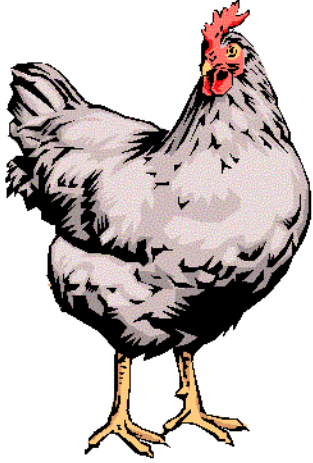
The story made up by the SEN group will be displayed using the data projector or in front of the whole class sitting around the computer. Everyone will read the story together.

Follow-up work:

Matching activities involving animals.

Finding out one out etc.

Resource for matching the animals or naming the animals.



Resource Page for counting/finding the difference etc.

How many ducks?



Point to the animal that is not the same?

Name the animal that is not the same.